



## Spare Parts Catalogue

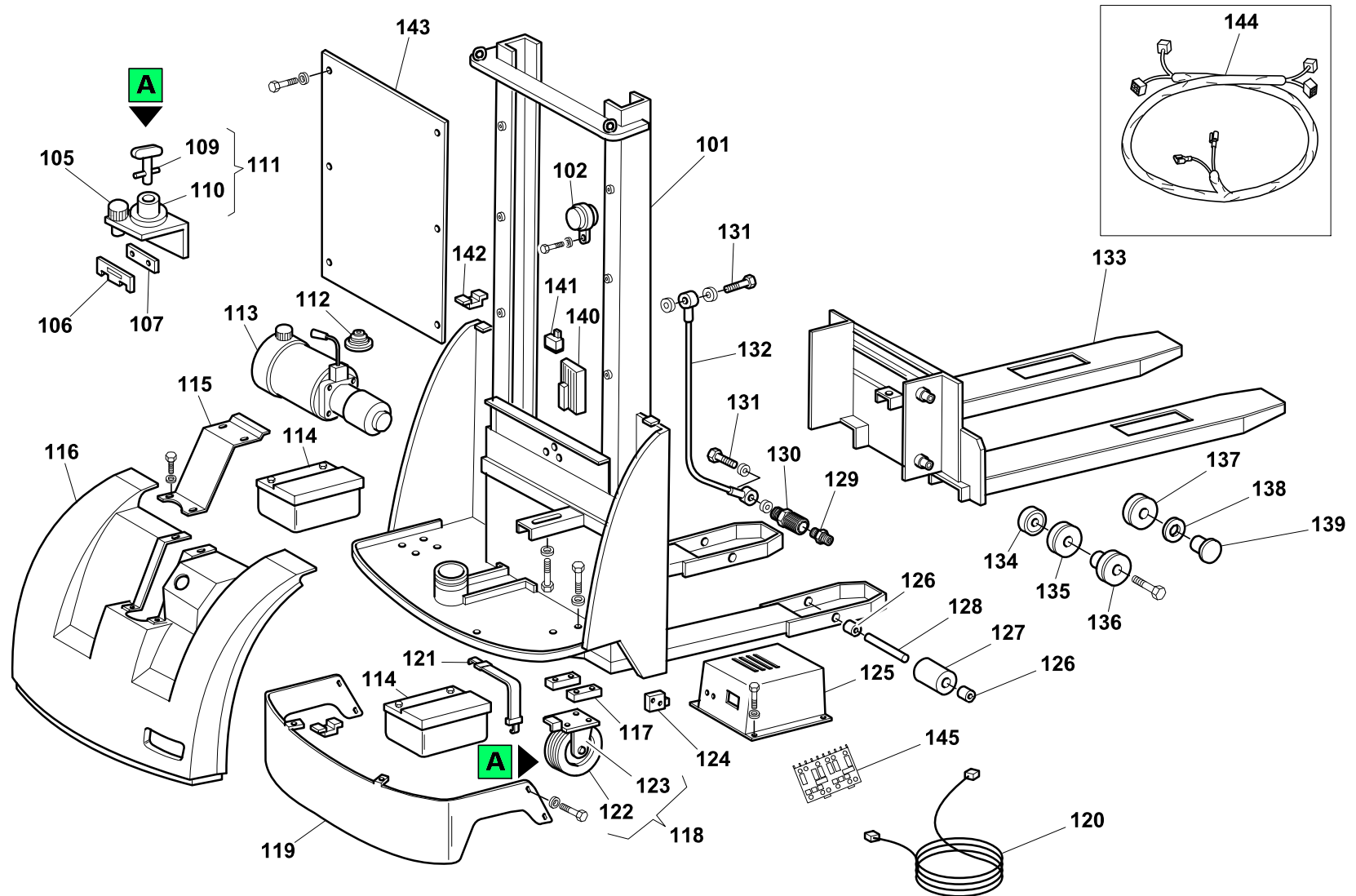
# GX10-16

Handling systems | **Deichselstapler**




Valid for machine code: **HC310000000**

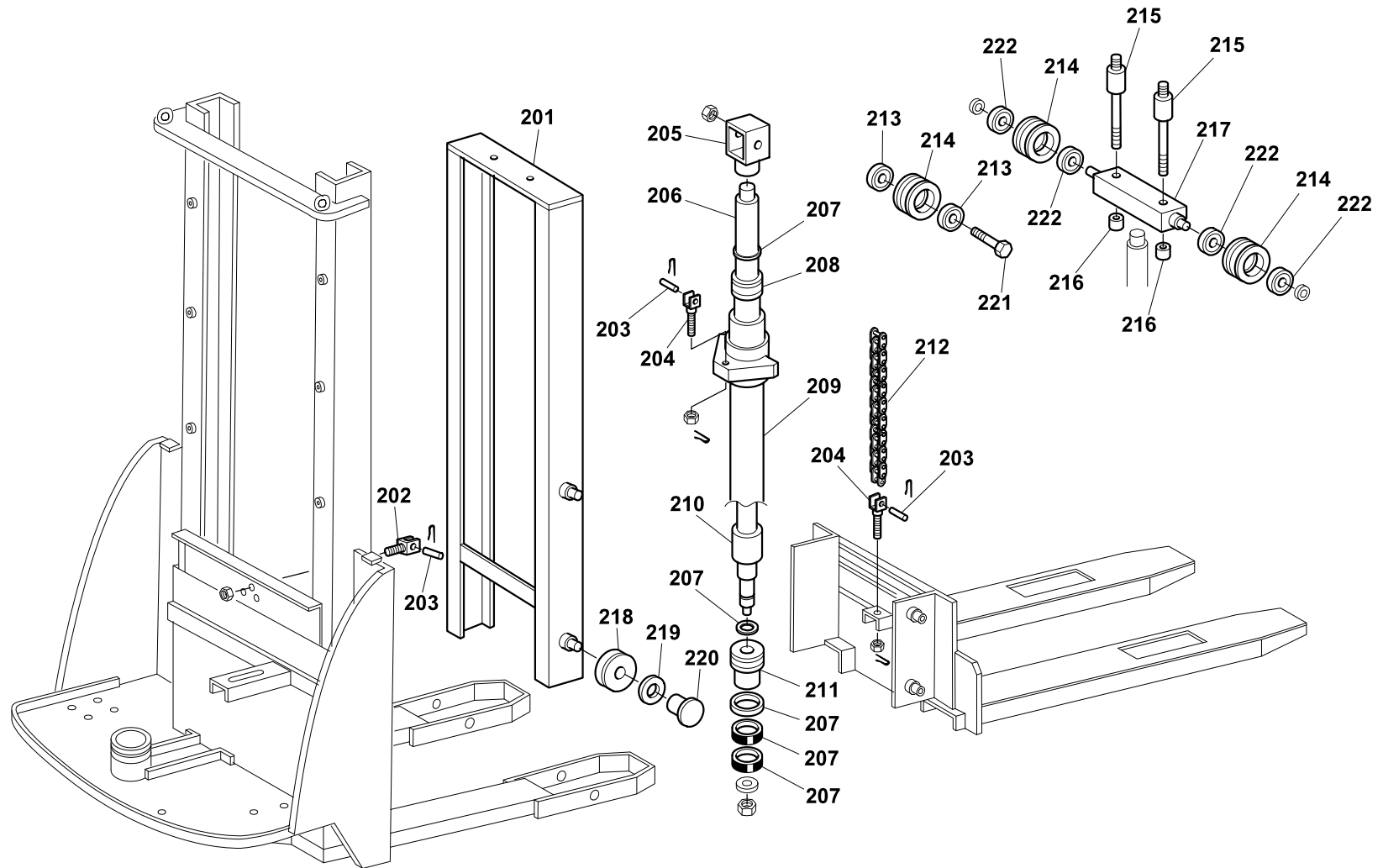
Revision: **0 (12/2006)**

Copyright 2010 Pramac Group, All Rights Reserved.

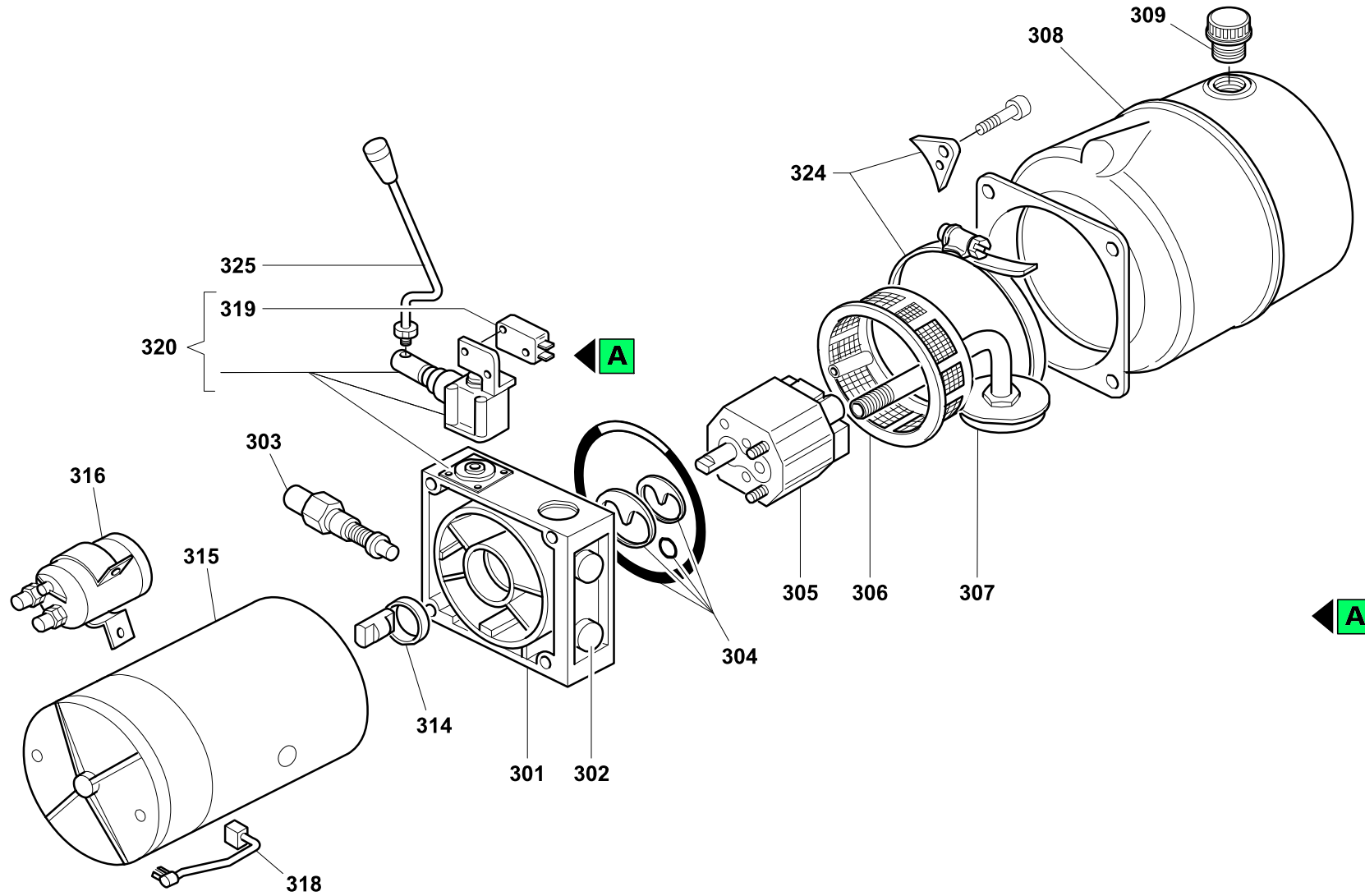



| Position | Part Number        | Description                                       | Notes   |
|----------|--------------------|---|---|
| 100      | RPR0050            | Wheel Shield (lag 150)                            | -   |
| 101      | V0311030041-PRAMAC | Telaio Gx 10/16 Vern. Verde Pramac                | -   |
| 102      | G075110            | Horn 24v Dc                                       | -   |
| 105      | G070625            | Fuse Holder Screw Cap + Fuse 6.3a                 | -   |
| 106      | G077540            | Fuse 160a (rfm Reghel)                            | -   |
| 107      | G070603            | Fuse Holder X Fuse 160amp                         | -   |
| 109      | G075220            | Key X Battery Disconnecting Switch                | -   |
| 110      | G075221            | Battery Disconnecting Switch Block                | -   |
| 111      | G075102            | Battery Disconnecting Switch 1 Pole               | -   |
| 112      | G052002            | Rubber Bellows (for Stackers)(0-rab/010)          | -   |
| 113      | ▲ G081029          | Central S3010001.000 X Tx12 - Gx10/12             | Gültig für Produkte mit der Seriennummer ab 2003HG001451  |
|          | ▲ G081035          | Hydraulic Power Pack '06 Tx12-gx10/12             |   |
|          | ▲ G081021          | Hydraulic Unit 222353003 Up100 (tx12- Gx10-12)    | Gültig für Produkte mit der Seriennummer bis 2003HG001450 |
| 114      | G089701            | Battery "exide Gel" 70ah-12v                      | -   |
|          | G099300024         | Battery 74ah-12v                                  | -   |
| 115      | V0310018015-PRAMAC | Hood Guard Lock Gx10-12 Green Pram.               | -   |
| 116      | S0310018010        | Hood Guard Gx 10-12                               | -   |
| 117      | V01941-9005        | Painted Wheel Spacer '06 Gx                       | -   |
| 118      | G053328            | Polyurethane Wheel T150x40/49 Cc Spgp60 +par.     | -   |
| 119      | S0313010039        | Motor Wheel Protection Gx10 Painted               | -   |
| 120      | G079311            | Battery Charger Cable L1500mm Schuko Socket       | -   |
| 121      | G000112            | Battery Elastic Webbing Gx10/12                   | -   |
| 122      | G053334            | Polyurethane/aluminium Wheel T8017cc New X G10-te | -   |
| 123      | G053412            | Supporto Ruota 150-160/50 H.m.120 Mm.40           | -   |
| 124      | G075006            | Microswitch Rolle                                 | -   |
| 125      | G008007            | Open Frame Battery Charger 14a-24v X Gx10-12 Gel  | -   |
|          | G099300026         | Open Frame Battery Charger 13a-24v(tx12-gx10)240v | -   |
|          | G099300058         | Open Frame Battery Charger 13a-24v X Tx12-gx10    | -   |
|          | G099300065         | Open Frame Battery Charger 13a-24v(straddle)120v  | -   |
| 126      | S0302016026        | Roller Spacer Sing.tx-gx (l.15) Zinc              | -   |
| 127      | S0302020117        | Polyurethane Roller D82x70 + Bearing              | -   |
| 128      | S0302015025        | Clevis Pin Tx/gx/lx "burnished"                   | -   |
| 129      | G084103            | Male/male Adaptators 3/8"                         | -   |
| 130      | G085003            | Flow Control Valve 3/8"                           | -   |
| 131      | G084001            | Screw Perforate (4 Holes ) 3/8" L 29 -0,5/0 Ch22  | -   |
| 132      | G083012            | Tube R1at 3/8"                                    | -   |
| 133      | V0317010035-9005   | Complete Fork Painted Gx 10/09-22                 | -   |

| Position | Part Number   | Description   | Notes   |
|----------|---|---|---|
| 134      | G010151   | Bearing 6305 (25-62-17)   | -   |
| 135      | S0207016006   | Sliding Roll Fork Tmc 10/16   | -   |
| 136      | S0207018001   | Fork Roller Guide Gx/tx   | -   |
| 137      | G019306   | Bearing D70 (csf.002)   | -   |
| 138      | G019310   | Pushing Disc (10004.102)  | -   |
| 139      | G019309   | Side Sliding Block (10002.102)  | -   |
| 140      | G075050   | Pramac Controller Rf050h70-120a X Gx 10   | -   |
| 141      | G077201   | Relay 30a 24v Contatto A Scambio  | -   |
| 142      | G034903   | Cage Nut M8 Zn  | -   |
| 143      | S0310018006   | Plexiglass Guard Tx10/20-16 Tx12/29-35 Gx12/29-35-38 Gx10/16 Fx12/29-35-38 G10 Vers.2 | -   |
| 144      |  S0318028013 | Electric Wiring Cables Gx 10-12 (pramac)  | Gültig für Produkte mit der Seriennummer bis 2003HG001450 |
|          |  S000045001  | Cablaggio Elettrico Gx 10-12 (pramac)   | Gültig für Produkte mit der Seriennummer ab 2003HG001451  |
|          |  P0CD00007   | Kit Cavi Completo Per Gx10 Pramac/ Hydr-app 03  |   |
| 145      | PTB00001  | Electronic Board For Open Battery Charger Cx Plus/cx/gx10/tx12/gx12                   | -   |
|          | PTB00005  | Scheda Elettronica Per Raddriz.   | -   |

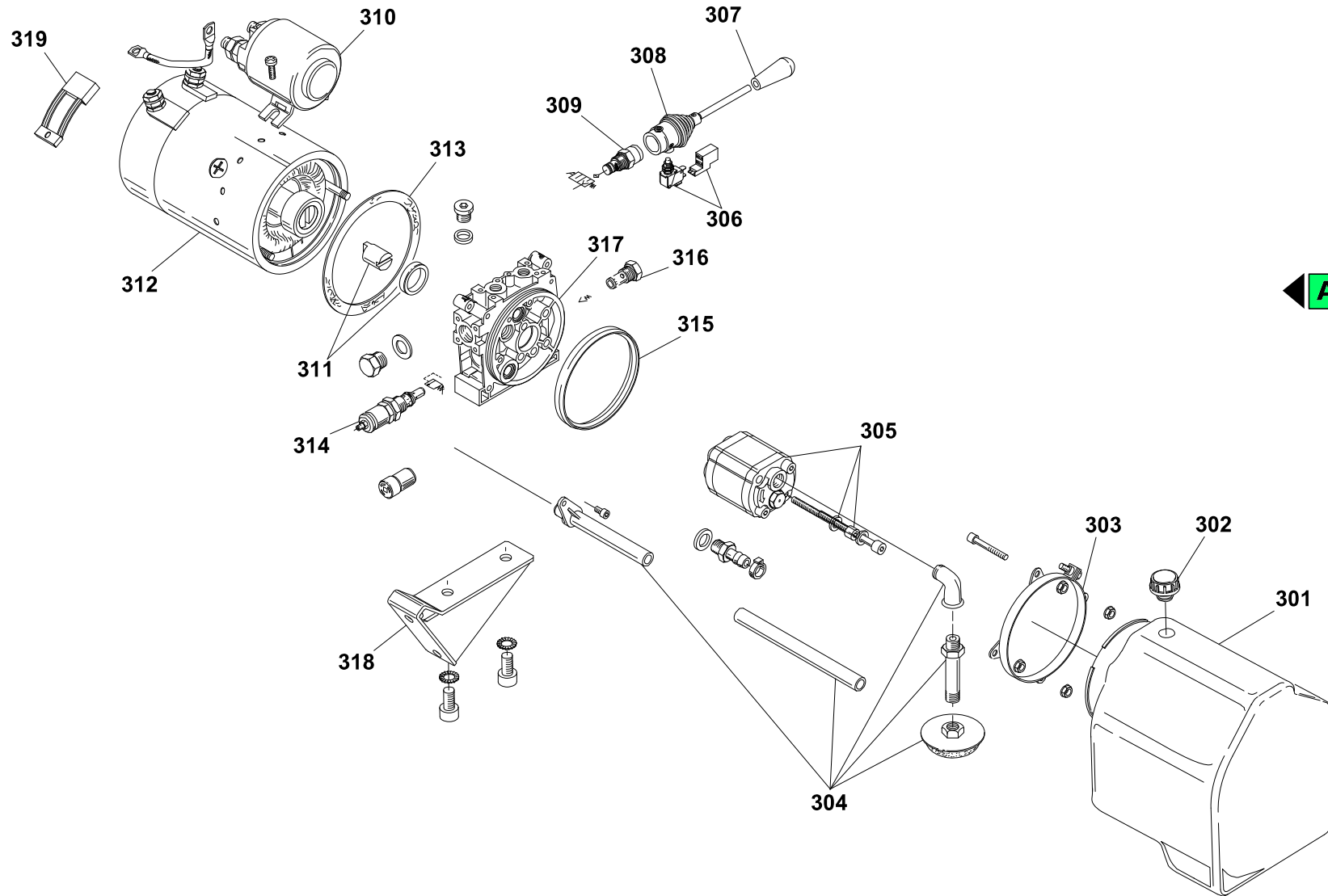



| Position | Part Number        | Description                                | Notes |
|----------|--------------------|--|-------|
| 202      | <b>S0307015015</b> | Short Chain Holder Te-tm-l/vt Zinc Plated  | -     |
| 203      | <b>G062104</b>     | Flayer Chain Pin BI544 D6x29               | -     |
| 204      | <b>S0307015017</b> | Long Chain Holder Te-tm-l-l/vt Zinc Plated | -     |
| 205      | <b>S0306051022</b> | Cast Iron Pulley Holder Te-tm-l Painted    | -     |
| 206      | <b>S000035306</b>  | Cylinder Rod Tx-gx 10/16                   | -     |
| 207      | <b>G090015</b>     | Gasket Set Tmc16/20                        | -     |
| 208      | <b>S0206011001</b> | Cylinder Bushing Tmc 10/16-20              | -     |
| 209      | <b>S0206010063</b> | Complete Cylinder Tx-gx 10/16 Painted      | -     |
| 210      | <b>S0206016008</b> | Cylinder Spacer L.35 Te-tm                 | -     |
| 211      | <b>S0306061009</b> | Piston Tmc 10/16-20                        | -     |
| 212      | <b>G062024</b>     | Flayer Chain Stub BI534-79p                | -     |
| 213      | <b>PMT240703</b>   | Sost. Con G010401                          | -     |
| 214      | <b>S0300201034</b> | Chain Pulley Sing. X12q Burnished          | -     |
| 215      | <b>S0306015052</b> | Free Lift Pin L10-l16                      | -     |
| 216      | <b>S0306015036</b> | Free Lift Pin Spacer Te-tm                 | -     |
| 217      | <b>S0306012072</b> | Double Pulley Holder L16 Painted "1998"    | -     |
| 218      | <b>G019306</b>     | Bearing D70 (csf.002)                      | -     |
| 219      | <b>G019310</b>     | Pushing Disc (10004.102)                   | -     |
| 220      | <b>G019309</b>     | Side Sliding Block (10002.102)             | -     |
| 221      | <b>S0306055043</b> | Cast Iron Pulley Pin Holder Burnished      | -     |
| 222      | <b>G010403</b>     | Bearing 6005 2rs (25-47-12)                | -     |

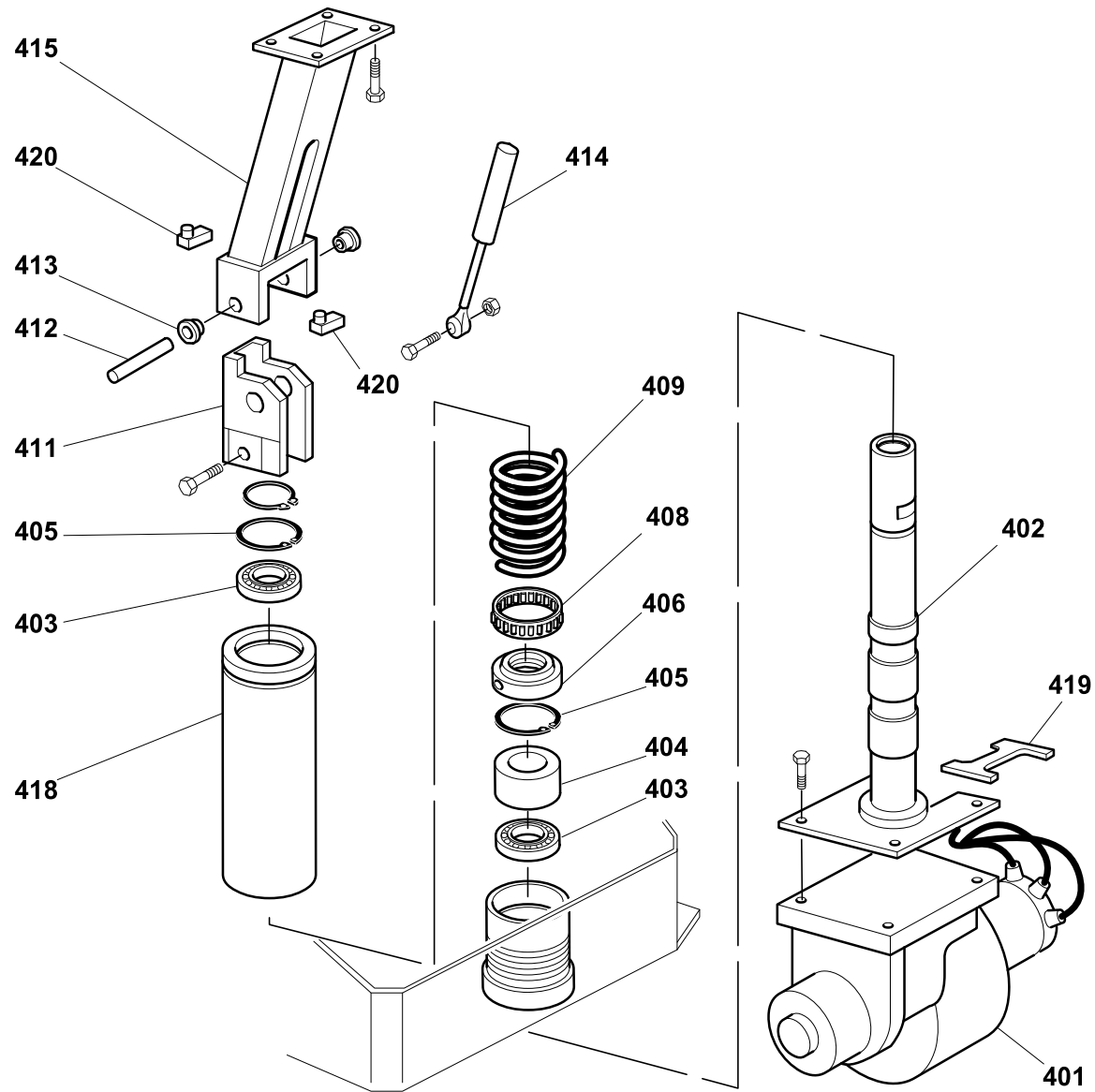


| Position | Part Number  | Description                                    | Notes   |
|----------|--|--|---|
| 301      | <b>G082195</b>   | Body Up100 K1g3-06+oil Seal                    | -   |
| 302      | <b>G082171</b>   | Non Return Valve Rs3/817-03                    | -   |
| 303      | <b>G082107</b>   | Relief Valve Vm01 Hdm10 T.95-210               | -   |
| 304      | <b>G082165</b>   | Body Gasket Set Up100                          | -   |
| 305      | <b>G082100</b>   | Pump Ap100/1.7 S.409+cop.748220020             | -   |
| 306      | <b>G082090</b>   | Filter Conv.150 Micron (757500070)             | -   |
| 307      | <b>G082196</b>   | Gruppo A.h105178-900 250m                      | -   |
| 308      | <b>G082228</b>   | Tank Up100 P08,or-bbt (673450200)              | -   |
| 309      | <b>G082099</b>   | Loading Cap Sf1/2g(hidr.678000310)             | -   |
| 314      | <b>G082158</b>   | Joint E145 M.c.c T.e                           | -   |
| 315      | <b>G082230</b>   | Engine C240ak/y0/d02p 024v 2.2                 | -   |
| 316      | <b>G082127</b>   | Complete Relay 24v C.c. P.c-e-f-g (ef.)        | -   |
| 318      | <b>G082233</b>   | Cable + Brushes 24v                            | -   |
| 319      | <b>G082223</b>   | Microswitch For Manual Command Up50-up100      | -   |
| 320      | <b>G082224</b>   | Valve Zr817/22-tvml + Cap                      | -   |
| 324      | <b>G082227</b>   | Tank Clamping Set Pl. Up100 6-14l.             | -   |
| 325      | <b>G082232</b>   | Lever Stick Al029 Up100                        | -   |
| 999      |  <b>G081021</b> | Hydraulic Unit 222353003 Up100 (tx12- Gx10-12) | Gültig für Produkte mit der Seriennummer bis 2003HG001450 |

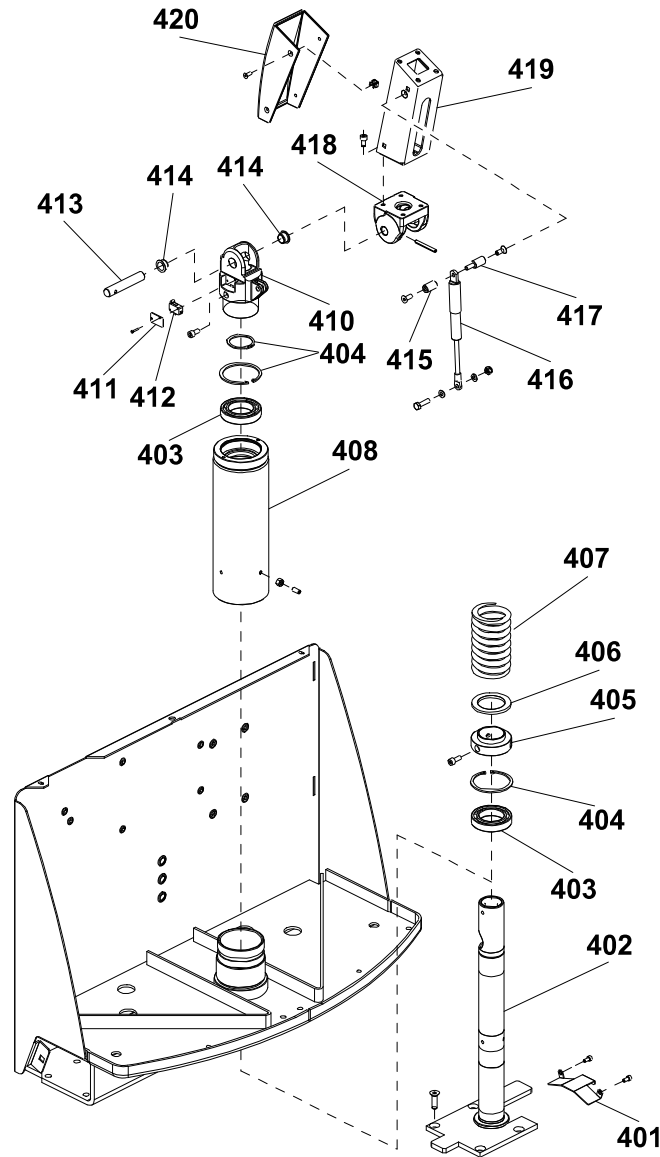




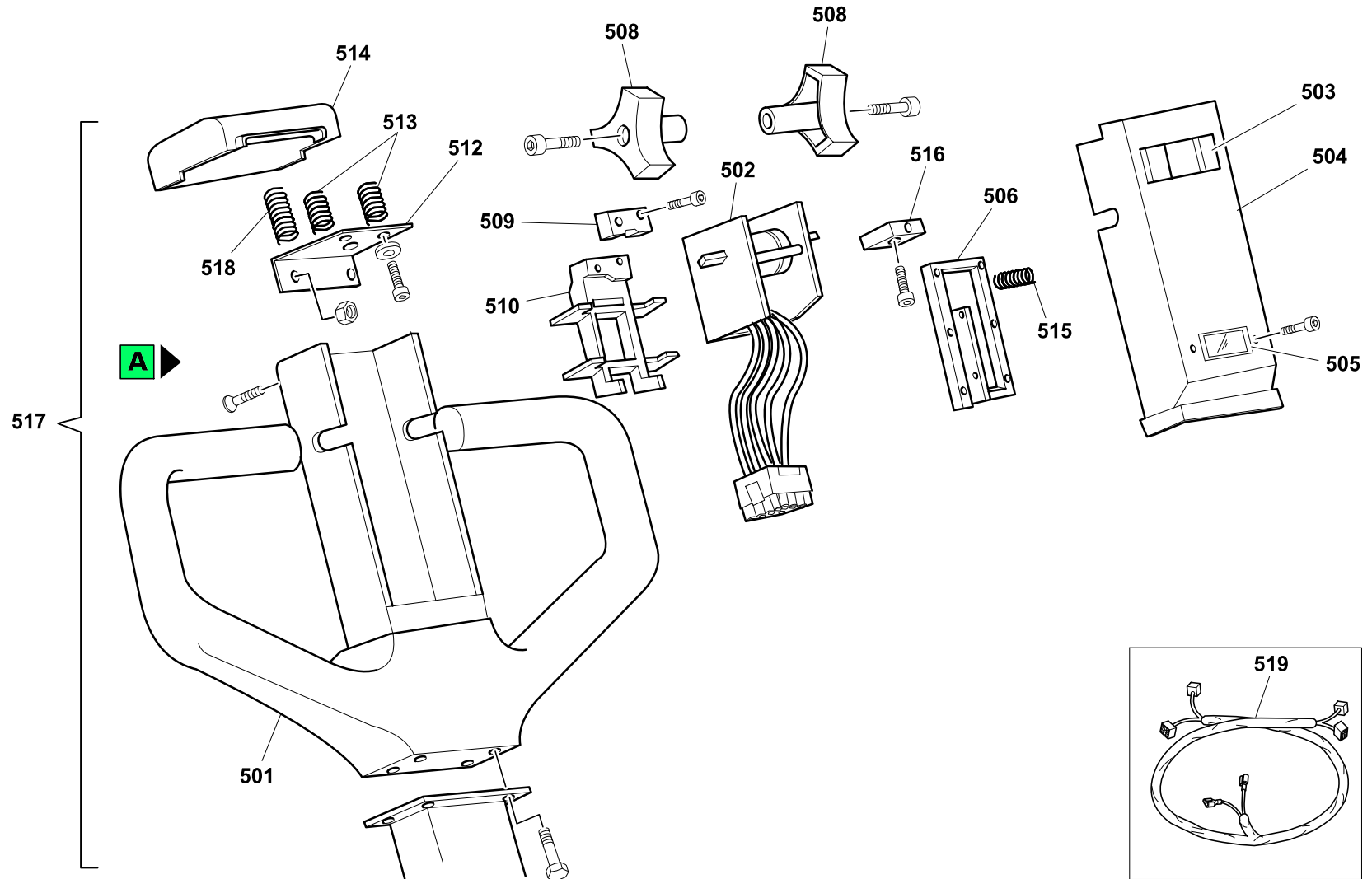
| Position | Part Number   | Description  | Notes  |
|----------|---|--|--|
| 301      | PCY61214500   | Reservoir Bottle   | -  |
| 302      | PCY49154500   | Tappo Serbatoio Olio Tx Hydr-app                                     | -  |
| 303      | PCY25004800   | Band For Hydraulic Unit H  | -  |
| 304      | PCY12002  | Kit Tubi Tx Hydr-app   | -  |
| 305      | PCY17050006   | Hydraulic Unit Pump Hx   | -  |
| 306      | PCY46109900   | Microswitch  | -  |
| 307      | PCY49104600   | Pomello Centralina Hydr-app  | -  |
| 308      | PCY25005800   | Hydraulic Power Pack Complete Lever                                  | -  |
| 309      | PCY20023000   | Valvola Tx10/12  | -  |
| 310      | PCY46113300   | Relais 24v 80a Iskra (11250143)                                      | -  |
| 311      | PCY60410600   | Giunto A Penna Per "mc" Con Motore Elettrico 2.05-2.2kw E Pompe Gr.1 | -  |
| 312      | PCY24011600   | Control Box Motor  | -  |
| 313      | PCY61200100   | Gasket For Hydraulic Unit H  | -  |
| 314      | PCY21000001   | Valvola Max 50-210 Bar   | -  |
| 315      | PCY61212400   | Hydraulic Unit O-ring Hx   | -  |
| 316      | PCY20020400   | Hydraulic Unit Retention Valve Hx                                    | -  |
| 317      | PCY71013005   | Central Flange   | -  |
| 318      | PCY17010067   | Piedino Ancoraggio Tx Hydr-app                                       | -  |
| 319      | PCY00004056   | Brush Kit Gx/10/12 Tx12  | -  |
| 999      |  G081029 | Central S3010001.000 X Tx12 - Gx10/12                                | Gültig für Produkte mit der Seriennummer ab 2003HG001451 |





| Position | Part Number | Description                            | Notes |
|----------|-------------|--|-------|
| 401      | G074425     | Motor Wheel 500w 24v Magn.perm.x Gx 10 | -     |
| 402      | S0313010025 | Motor Wheel Support Gx 10 Painted      | -     |
| 403      | G010214     | Bearing 6010 2rs(50-80-16)             | -     |
| 404      | S0303018002 | Motor Wheel Sliding Bushing L10        | -     |
| 405      | G090021     | Stackers Motor Wheel Seeger Kit        | -     |
| 406      | S0303016030 | Motor Wheel Shaft Washer L10           | -     |
| 408      | S0313080057 | Complete Motor Bearing Stacker         | -     |
| 409      | G001108     | Spring De78 F.11x162 P.22 Xg10         | -     |
| 411      | P0KI00006   | Tiller Kit L/k20                       | -     |
| 412      | S0304013027 | Handle Pin Gx-lx-k20 "burnished"       | -     |
| 413      | G016353     | Self-lubricating Bushing 20x28x35 L=20 | -     |
| 414      | G001703     | Gas Spring 198.236.17-gf2              | -     |
| 415      | S0304010142 | Handle Support Painted "l"-k20"        | -     |
| 418      | S0303010139 | Spring Loader Lx-gx Zinc Plated        | -     |
| 419      | S0303010153 | Motor Wheel Wiring Bracket L10-I16     | -     |
| 420      | G075004     | Microswitch For Tow Bar L10            | -     |

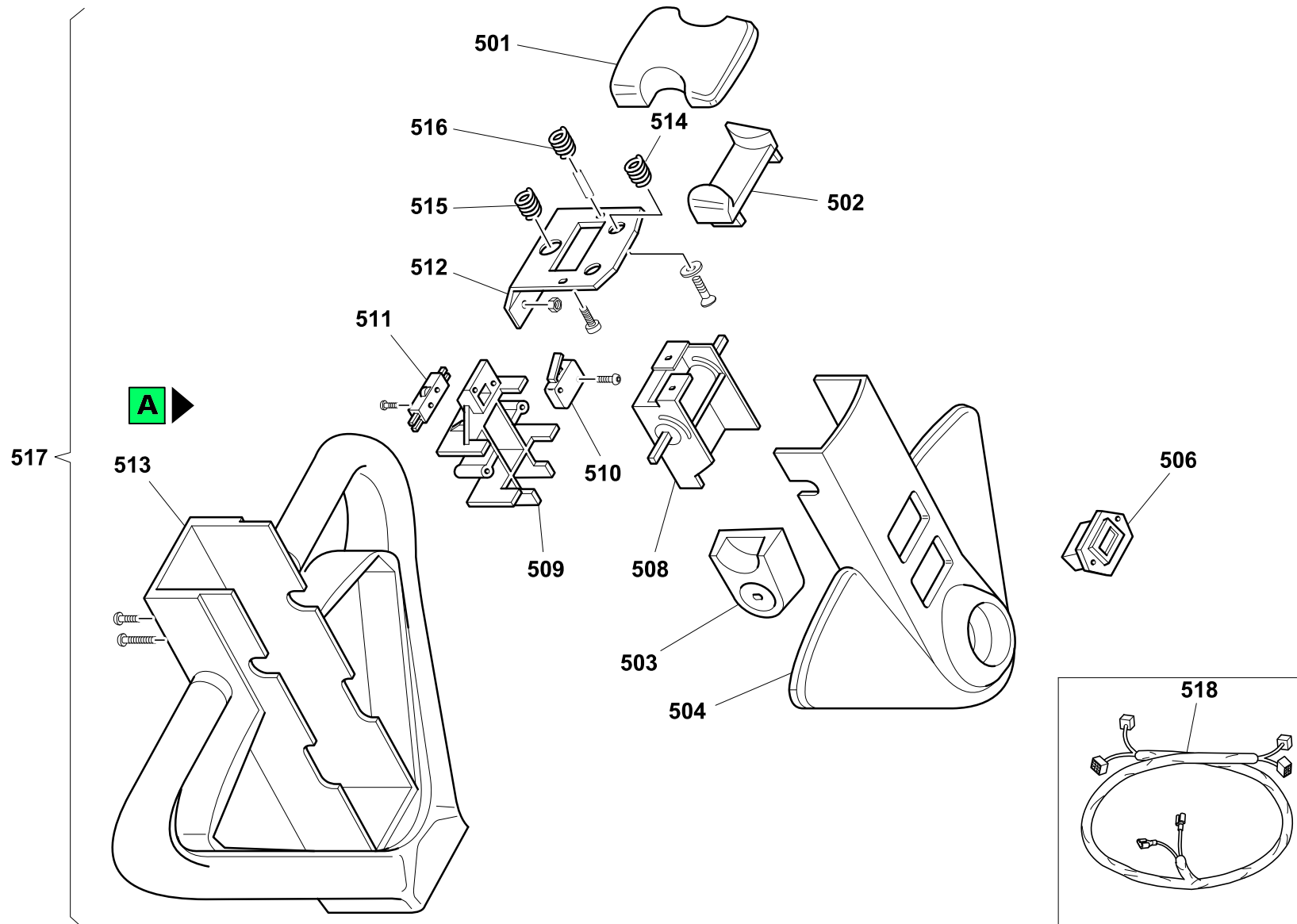


| Position | Part Number      | Description  | Notes |
|----------|------------------|--|-------|
| 401      | S0303010153      | Motor Wheel Wiring Bracket L10-I16                         | -     |
| 402      | S0313010025      | Motor Wheel Support Gx 10 Painted                          | -     |
| 403      | G010214          | Bearing 6010 2rs(50-80-16)                                 | -     |
| 404      | G090021          | Stackers Motor Wheel Seeger Kit                            | -     |
| 405      | S0303016030      | Motor Wheel Shaft Washer L10                               | -     |
| 406      | S0313080057      | Complete Motor Bearing Stacker                             | -     |
| 407      | G001108          | Spring De78 F.11x162 P.22 Xg10                             | -     |
| 408      | S0303010139      | Spring Loader Lx-gx Zinc Plated                            | -     |
| 410      | V000044101-90050 | Supporto Timone Gx-lx '03 Vern                             | -     |
| 411      | S000044034       | Protection Plate Tiller Microswitch Gx-lx Dark Zinc Coated | -     |
| 412      | G075004          | Microswitch For Tow Bar L10                                | -     |
| 413      | S000025501       | Tiller Pin Gx-lx '03 Burnished                             | -     |
| 414      | G016307          | Boccola Flangiata Du 18-20                                 | -     |
| 415      | S000025503       | Distanziale Madre vite Timone Gx-lx '03 Brunito            | -     |
| 416      | G001703          | Gas Spring 198.236.17-gf2                                  | -     |
| 417      | S000025502       | Distanziale Vite-madre vite Timone Gx-lx '03 Brunito       | -     |
| 418      | S000045104       | Tiller Bracket '03 Fx-gx-lx Galvanized                     | -     |
| 419      | V09415-9005      | Tiller Box Gx-lx '03 Painted                               | -     |
| 420      | S000025901       | Coperchio Timone Gx-lx '03                                 | -     |

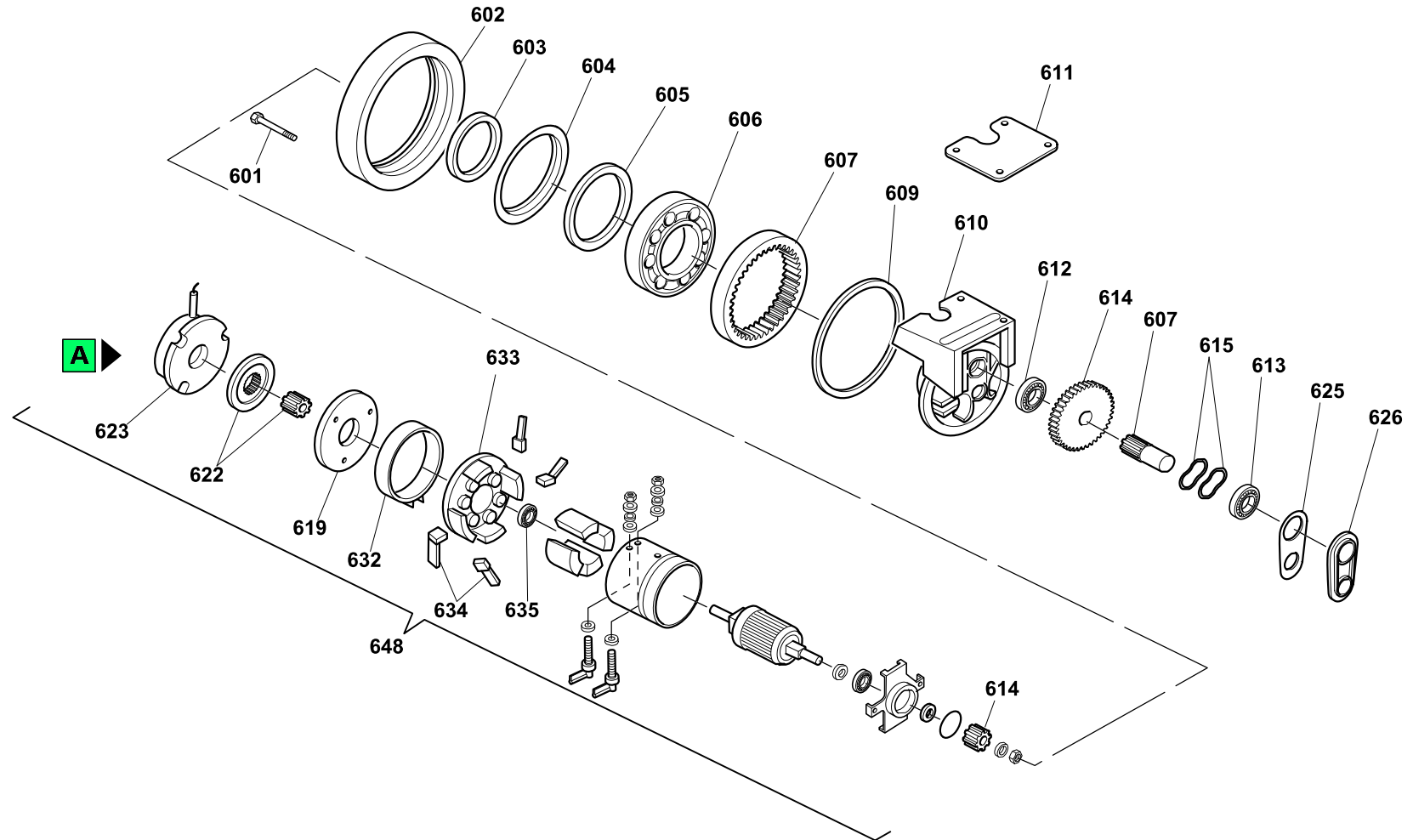


| Position | Part Number   | Description                                   | Notes  |
|----------|---|---|--|
| 501      | S0304010208   | Coated Handle (poly) Lk                       | -  |
| 502      | G077007   | Electronic Throttle Gph/ht3 X Gx10 Wired      | -  |
| 503      | S0304018020   | Handle Pushbutton Switch Lk                   | -  |
| 504      | S0304018019   | Cover Lk X Stackers                           | -  |
| 505      | G079005   | Battery Level Gauge Curtis                    | -  |
| 506      | S0304018022   | Handle Microswitch Support Lk                 | -  |
| 508      | S0304018018   | Handle Butterfly Lk                           | -  |
| 509      | G075016   | Microswitch 5a 250v                           | -  |
| 510      | S0304018021   | Handle Support Potentiometer Lk               | -  |
| 512      | S0304017011   | Handle Emergency Support Plate Lk             | -  |
| 513      | G001132   | Spring De11 Wire 1 - 4 Turns L10 Mol/zn       | -  |
| 514      | S0304018017   | Handle Emergency Lk                           | -  |
| 515      | G001131   | Spring De5,6 F0,5 - 10 Turns L20 Zinc Plated  | -  |
| 516      | G075017   | Microswitch Xg52-j21                          | -  |
| 517      |  S0304010285 | Handle Complete Lk/elev. X Gx 10              | Gültig für Produkte mit der Seriennummer ab 1999HG000001 zu 2000HG001348 |
|          |  S0314110065 | Handle '00 Complete Stacker Gx                | Gültig für Produkte mit der Seriennummer ab 2000HG001349                 |
| 518      | G001134   | Spring De12,3 F1 - 9 Turns - L=24 Zinc Plated | -  |
| 519      | S0319012001   | Cable Tiller L/g (curtis)                     | -  |





| Position | Part Number | Description                                   | Notes |
|----------|-------------|---|-------|
| 501      | S0304178033 | Handle Emergency '00                          | -     |
| 502      | S0304178032 | Handle Horn Rocker Switch '00                 | -     |
| 503      | S0304178031 | Handle Butterfly '00                          | -     |
| 504      | S0314108031 | Handle Cover '00 Gx Stackers Series           | -     |
| 506      | G079005     | Battery Level Gauge Curtis                    | -     |
| 508      | G077007     | Electronic Throttle Gph/ht3 X Gx10 Wired      | -     |
| 509      | S0304178034 | Handle Potentiometer Support '00              | -     |
| 510      | G075017     | Microswitch Xg52-j21                          | -     |
| 511      | G075016     | Microswitch 5a 250v                           | -     |
| 512      | G07330      | Handle Emergency Support Plate '00            | -     |
| 513      | S0304178044 | Coated Handle '00 (poly)                      | -     |
| 514      | G001132     | Spring De11 Wire 1 - 4 Turns L10 Mol/zn       | -     |
| 515      | G001134     | Spring De12,3 F1 - 9 Turns - L=24 Zinc Plated | -     |
| 516      | G001131     | Spring De5,6 F0,5 - 10 Turns L20 Zinc Plated  | -     |
| 517      | S000044010  | Complete Tiller '05 Gx 10                     | -     |
|          | S0314110065 | Handle '00 Complete Stacker Gx                | -     |
| 518      | P0CD00015   | Electric Wiring Gx10/12 Edition li            | -     |
|          | S0319012001 | Cable Tiller L/g (curtis)                     | -     |



| Position | Part Number | Description                                    | Notes |
|----------|-------------|--|-------|
| 601      | G073242     | Screw Wheel                                    | -     |
| 602      | G000120     | Motor Wheel Rubber Ring Ecol. Gx10-g10 (13271) | -     |
|          | G073259     | Rubber Motor Wheel Ring G10-gx10               | -     |
|          | G073326     | Motor Wheel Adiprene Ring G10                  | -     |
|          | PLC13266S   | Anello Motoruota Gomma Scolpito Per Gx10       | -     |
|          | PLC13269S   | Anello Motoruota Adiprene Scolpito Per Gx10    | -     |
| 603      | G073006     | Motor Wheel Ring                               | -     |
| 604      | G073008     | Protection Ring                                | -     |
| 605      | G073007     | Motor Wheel Gasket                             | -     |
| 606      | G073009     | Bearing  | -     |
| 607      | G073260     | Pinion +crown Wheel                            | -     |
| 609      | G073245     | Motor Wheel Gasket                             | -     |
| 610      | G073246     | Motor Wheel Casting                            | -     |
| 611      | G073011     | Motor Wheel Gasket                             | -     |
| 612      | G073247     | Bearing  | -     |
| 613      | G073012     | Roulement Pos.174                              | -     |
| 614      | G073029     | Pinion + Driver Wheel                          | -     |
| 615      | G073030     | Compensation Ring                              | -     |
| 619      | G073016     | Brake Holder Plate                             | -     |
| 622      | G073066     | Brake Lining +hub                              | -     |
| 623      | G073150     | Electric Brake Motor 24v                       | -     |
| 625      | G073013     | Gasket   | -     |
| 626      | G073014     | Cover  | -     |
| 632      | G073032     | Paddled Clamp                                  | -     |
| 633      | G073115     | Slip Support                                   | -     |
| 634      | G073138     | Brushes Motor Kit 24v                          | -     |
| 635      | G073249     | Slip Bearing 6201 2rsr3                        | -     |
| 648      | G073336     | Permanent Magnet Motor                         | -     |